

## Child Protection and Safeguarding Policy

### Contents

<b>DSL Cotact Details</b>	<b>1</b>
1. Aims	1
2. Legislation and statutory guidance	2
3. Definitions	3
4. Equality statement	3
5. Roles and responsibilities	4
6. Confidentiality	7
7. Recognising abuse and taking action	8
8. Online safety and the use of mobiles or digital devices	14
9. Notifying parents or carers	15
10. Pupils with special educational needs, disabilities or health issues	16
11. Complaints and concerns about school safeguarding policies	16
14. Record-keeping	16
15. Training	17
16. Monitoring arrangements	18
17. Links with other policies	18
Appendix 1: types of abuse	20
Appendix 2: safer recruitment and DBS checks – policy and procedures	21
Appendix 3: allegations of abuse made against staff	25
Appendix 4: specific safeguarding issues	31
Appendix 5: when and how to share information	37
Appendix 6: KCSIE Part 1 Staff Acknowledgement Form	39

**If you have any concerns in regard to the safety and wellbeing on a pupil at IBSB, please contact one of the following members of the IBSB Child Safeguarding Team:**

Name	Position	Contact details
Delia Ciobanu	Primary School Student Counsellor	<a href="mailto:delia.ciorbanu@ibsb.ro">delia.ciorbanu@ibsb.ro</a>
Cristina Latcu	Secondary School Student Counsellor	<a href="mailto:cristina.latcu@ibsb.ro">cristina.latcu@ibsb.ro</a>
Alan Cornish	Head of Primary (PS DSL)	<a href="mailto:alan.cornish@ibsb.ro">alan.cornish@ibsb.ro</a>
Roy Chambers	Deputy Head, Pastoral (SS DSL)	<a href="mailto:roy.chambers@ibsb.ro">roy.chambers@ibsb.ro</a>
Kendall Peet	Headmaster	<a href="mailto:kendall.peet@ibsb.ro">kendall.peet@ibsb.ro</a> (Mob) 0748028545

### 1. Aims

The school aims to ensure that:

- › Appropriate action is taken in a timely manner to safeguard and promote children's welfare
- › All staff are aware of their statutory responsibilities with respect to safeguarding
- › Staff are properly trained in recognising and reporting safeguarding issues

## 2. Legislation and statutory guidance

This policy has been developed in accordance with the principles established by the United Nations Convention on the Rights of the Child (UNCRC) 1989; and is in line with the Department for Education's statutory guidance [Keeping Children Safe in Education \(2024\)](#) and [Working Together to Safeguard Children \(2018\)](#), and the [Governance Handbook](#).

This policy is also based on the following legislation:

- › Part 3 of the schedule to the [Education \(Independent School Standards\) Regulations 2014](#), which places a duty on independent schools to safeguard and promote the welfare of pupils at the school
- › [The Children Act 1989](#) (and [2004 amendment](#)), which provides a framework for the care and protection of children
- › Section 5B(11) of the Female Genital Mutilation Act 2003, as inserted by section 74 of the [Serious Crime Act 2015](#), which places a statutory duty on teachers to report to the police where they discover that female genital mutilation (FGM) appears to have been carried out on a girl under 18
- › [Statutory guidance on FGM](#), which sets out responsibilities with regards to safeguarding and supporting girls affected by FGM
- › [The Rehabilitation of Offenders Act 1974](#), which outlines when people with criminal convictions can work with children
- › Schedule 4 of the [Safeguarding Vulnerable Groups Act 2006](#), which defines what 'regulated activity' is in relation to children
- › [Statutory guidance on the Prevent duty](#), which explains schools' duties under the Counter-Terrorism and Security Act 2015 with respect to protecting people from the risk of radicalisation and extremism
- › [The Human Rights Act 1998](#), which explains that being subjected to harassment, violence and/or abuse, including that of a sexual nature, may breach any or all of the rights which apply to individuals under the [European Convention on Human Rights](#) (ECHR)
- › [The Equality Act 2010](#), which makes it unlawful to discriminate against people regarding particular protected characteristics (including disability, sex, sexual orientation, gender reassignment and race). This means our governors and headmaster should carefully consider how they are supporting their pupils with regard to these characteristics. The Act allows our school to take positive action to deal with particular disadvantages affecting pupils (where we can show it's proportionate). This includes making reasonable adjustments for disabled pupils. For example, it could include taking positive action to support girls where there's evidence that they're being disproportionately subjected to sexual violence or harassment
- › [The Public Sector Equality Duty \(PSED\)](#), which explains that we must have due regard to eliminating unlawful discrimination, harassment and victimisation. The PSED helps us to focus on key issues of concern and how to improve pupil outcomes. Some pupils may be more at risk of harm from issues such as sexual violence; homophobic, biphobic or transphobic bullying; or racial discrimination
- › The [Childcare \(Disqualification\) and Childcare \(Early Years Provision Free of Charge\) \(Extended Entitlement\) \(Amendment\) Regulations 2018](#) (referred to in this policy as the "2018 Childcare Disqualification Regulations") and [Childcare Act 2006](#), which set out who is disqualified from working with children
- › This policy also meets requirements relating to safeguarding and welfare in the [statutory framework for the Early Years Foundation Stage](#)
- › This policy also meets Romanian law No. 272/2004 on Protection and Promotion of Child's Right 2004 (For information on Romanian Child Protection procedures and agencies [www.dreptonline.ro/legislatie/legea\\_protectiei\\_copilului.php](http://www.dreptonline.ro/legislatie/legea_protectiei_copilului.php))

## 3. Definitions

**Safeguarding and promoting the welfare of children** means:

- › Protecting children from maltreatment
- › Preventing impairment of children's mental and physical health or development
- › Ensuring that children grow up in circumstances consistent with the provision of safe and effective care
- › Taking action to enable all children to have the best outcomes

**Child protection** is part of this definition and refers to activities undertaken to prevent children suffering, or being likely to suffer, significant harm.

**Abuse** is a form of maltreatment of a child, and may involve inflicting harm or failing to act to prevent harm. Appendix 1 explains the different types of abuse.

**Neglect** is a form of abuse and is the persistent failure to meet a child's basic physical and/or psychological needs, likely to result in the serious impairment of the child's health or development. Appendix 1 defines neglect in more detail.

**Sharing of nudes and semi-nudes** (also known as sexting or youth produced sexual imagery) is where children share nude or semi-nude images, videos or live streams.

**Children** includes everyone under the age of 18.

**Victim** is a widely understood and recognised term, but we understand that not everyone who has been subjected to abuse considers themselves a victim, or would want to be described that way. When managing an incident, we will be prepared to use any term that the child involved feels most comfortable with.

**Alleged perpetrator(s)** and **perpetrator(s)** are widely used and recognised terms. However, we will think carefully about what terminology we use (especially in front of children) as, in some cases, abusive behaviour can be harmful to the perpetrator too. We will decide what's appropriate and which terms to use on a case-by-case basis.

## 4. Equality statement

Some children have an increased risk of abuse, and additional barriers can exist for some children with respect to recognising or disclosing it. We are committed to anti-discriminatory practice and recognise children's diverse circumstances. We ensure that all children have the same protection, regardless of any barriers they may face.

We give special consideration to children who:

- › Have special educational needs (SEN) or disabilities or health conditions (see section 10)
- › Are young carers
- › May experience discrimination due to their race, ethnicity, religion, gender identification or sexuality
- › Have English as an additional language
- › Are known to be living in difficult situations – for example, temporary accommodation or where there are issues such as substance abuse or domestic violence
- › Are at risk of FGM, sexual exploitation, forced marriage, or radicalisation
- › Are asylum seekers
- › Are at risk due to either their own or a family member's mental health needs
- › Are looked after or previously looked after (see section 12)
- › Are missing from education
- › Whose parent/carer has expressed an intention to remove them from school to be home educated



## 5. Roles and responsibilities

Safeguarding and child protection is **everyone's** responsibility. This policy applies to all staff, volunteers, and governors in the school. Our policy and procedures also apply to extended school and off-site activities.

The school plays a crucial role in preventative education. This is in the context of a whole-school approach to preparing pupils for life in Romania and abroad, and a culture of zero tolerance of sexism, misogyny/misandry, homophobia, biphobia and sexual violence/harassment. This will be underpinned by our:

- › Behaviour for Learning Policy
- › Pastoral support system
- › Planned programme of relationships, sex and health education (RSHE), which is inclusive and delivered regularly, tackling issues such as:
  - Healthy and respectful relationships
  - Boundaries and consent
  - Stereotyping, prejudice and equality
  - Body confidence and self-esteem
  - How to recognise an abusive relationship (including coercive and controlling behaviour)
  - The concepts of, and laws relating to, sexual consent, sexual exploitation, abuse, grooming, coercion, harassment, rape, domestic abuse, so-called honour-based violence such as forced marriage and female genital mutilation (FGM) and how to access support
  - What constitutes sexual harassment and sexual violence and why they're always unacceptable

### 5.1 All staff

All staff will:

- › Read and understand Part 1 and Annex B of the Department for Education's statutory safeguarding guidance, [Keeping Children Safe in Education](#), and review this guidance at least annually
- › Sign a declaration at the beginning of each academic year to say that they have reviewed the guidance
- › Reinforce the importance of online safety when communicating with parents. This includes making parents aware of what we ask children to do online (e.g. sites they need to visit or who they'll be interacting with online)
- › Provide a safe space for pupils who are LGBT to speak out and share their concerns

All staff will be aware of:

- › Our systems which support safeguarding, including this child protection and safeguarding policy, outlining the role and identity of the designated safeguarding lead (DSL) and deputy leads, the Staff Recruitment and Contract Renewal Policy, Staff Code of Conduct Policy and Internal Regulations, the WS Behaviour for Learning Policy, Whole School Safety Policy, Whole School Computer, Personal Computer, Mobile Phone, & Internet Use Policy, and the safeguarding response to children who go missing from education outlined in the Whole School Lost or Missing Student Policy.
- › What to do if they identify a safeguarding issue or a child tells them they are being abused or neglected, including specific issues such as FGM, and how to maintain an appropriate level of confidentiality while liaising with relevant professionals
- › The signs of different types of abuse and neglect, as well as specific safeguarding issues, such as child-on-child abuse, child sexual exploitation (CSE), child criminal exploitation (CCE), indicators of being at risk from or involved with serious violent crime, FGM, radicalisation and serious violence (including that linked to county lines)



- › The importance of reassuring victims that they are being taken seriously and that they will be supported and kept safe
- › The fact that children can be at risk of harm inside and outside of their home, at school and online
- › The fact that children who are (or who are perceived to be) lesbian, gay, bi or trans (LGBT) can be targeted by other children
- › What to look for to identify children who need help or protection

Section 15 and appendix 4 of this policy outline in more detail how staff are supported to do this.

### 5.2 The designated safeguarding lead (DSL)

The DSL is a member of the senior leadership team. Our DSL is the Head of Primary and Head of Secondary. The DSL takes lead responsibility for child protection and wider safeguarding in the school.

During term time, the DSL will be available during school hours for staff to discuss any safeguarding concerns.

Posters are placed around the campus and information sent home to parents to inform who the DSLs are, what their role is, and how they can be contacted.

When the DSL is absent, the Student Counsellors will act as cover.

If the DSL and Student Counsellors are not available, Headmaster will act as cover (for example, during out-of-hours/out-of-term activities).

The DSL will be given the time, training, resources, and support to:

- › Provide training, advice, and support to other staff on child welfare and child protection matters
- › Take part in DSL meetings
- › Contribute to the assessment of children
- › Refer suspected cases, as appropriate, to the relevant body (local authority children's social care, Disclosure and Barring Service, and/or police), and support staff who make such referrals directly
- › Have a good understanding of harmful sexual behaviour

The DSL will also:

- › Keep the Headmaster and Executive Director informed of any issues
- › Liaise with the appropriate local authorities
- › Work with the Headmaster to prepare the school's child safeguarding policies and procedures
- › Be confident that they know what local specialist support is available to support all children involved (including victims and alleged perpetrators) in sexual violence and sexual harassment, and be confident as to how to access this support
- › Be aware that children must have an 'appropriate adult' to support and help them in the case of a police investigation or search

The full responsibilities of the DSL and Student Counsellors are set out in their job description.

### 5.3 The governing board

The governing board will:

- › Facilitate a whole-school approach to safeguarding, ensuring that safeguarding and child protection are at the forefront of, and underpin, all relevant aspects of process and policy development
- › Evaluate and approve this policy at each review, ensuring it complies with the law, and hold the Headmaster to account for its implementation



- › Be aware of its obligations under the Human Rights Act 1998, the Equality Act 2010 (including the Public Sector Equality Duty)
- › Appoint the Executive Director to monitor the effectiveness of this policy in conjunction with the full governing board.
- › Make sure:
  - The DSL has the appropriate status and authority to carry out their job, including additional time, funding, training, resources and support
  - Online safety is a running and interrelated theme within the whole-school approach to safeguarding and related policies
  - The leadership team and relevant staff are aware of and understand the IT filters and monitoring systems in place, manage them effectively, and know how to escalate concerns
  - The school has procedures to manage any safeguarding concerns (no matter how small) or allegations that do not meet the harm threshold (low-level concerns) about staff members (including supply staff, volunteers and contractors). Appendix 3 of this policy covers this procedure
  - That this policy reflects that children with SEND, or certain medical or physical health conditions, can face additional barriers to any abuse or neglect being recognised
- › Where another body is providing services or activities
  - Seek assurance that the other body has appropriate safeguarding and child protection policies/procedures in place, and inspect them if needed
  - Make sure there are arrangements for the body to liaise with the school about safeguarding arrangements, where appropriate
  - Make sure that safeguarding requirements are a condition of using the school premises, and that any agreement to use the premises would be terminated if the other body fails to comply

The Executive Director will act as the 'case manager' in the event that an allegation of abuse is made against the Headmaster, where appropriate (see appendix 3).

All members of the SLT will read Keeping Children Safe in Education in its entirety.

### 5.4 The Headmaster

The Headmaster is responsible for the implementation of this policy, including:

- › Ensuring that staff (including temporary staff) and volunteers:
  - Are informed of our systems which support safeguarding, including this policy, as part of their induction
  - Understand and follow the procedures included in this policy, particularly those concerning referrals of cases of suspected abuse and neglect
- › Communicating this policy to parents/carers when their child joins the school and via the school website
- › Ensuring that the DSL has appropriate time, training and resources, and that there is always adequate cover if the DSL is absent
- › Ensuring that all staff undertake appropriate safeguarding and child protection training, and updating the content of the training regularly
- › Acting as the 'case manager' in the event of an allegation of abuse made against another member of staff or volunteer, where appropriate (see appendix 3)
- › Making decisions regarding all low-level concerns, though they may wish to collaborate with the DSL on this



- › Ensuring the relevant staffing ratios are met, where applicable

## 5.5 Virtual school heads

Virtual school heads have a non-statutory responsibility for the strategic oversight of the educational attendance, attainment and progress of pupils with a social worker.

They should also identify and engage with key professionals, e.g. DSLs, SENCOs

## 6. Confidentiality

Staff obligations in regard to confidentiality are outlined within the Internal Regulations.

To ensure effective child safeguarding, we acknowledge the following:

- › Timely information sharing is essential to effective safeguarding
- › Fears about sharing information must not be allowed to stand in the way of the need to promote the welfare, and protect the safety, of children
- › The Data Protection Legislation does not prevent, or limit, the sharing of information for the purposes of keeping children safe
- › If staff need to share 'special category personal data', this may be done without consent if: it is not possible to gain consent; it cannot be reasonably expected that a practitioner gains consent; or if to gain consent would place a child at risk
- › Staff should never promise a child that they will not tell anyone about a report of abuse, as this may not be in the child's best interests
- › If a victim asks the school not to tell anyone about the sexual violence or sexual harassment:
  - There's no definitive answer, because even if a victim doesn't consent to sharing information, staff may still lawfully share it if there's another legal basis that applies
  - The DSL will have to balance the victim's wishes against their duty to protect the victim and other children
  - The DSL should consider that:
    - Parents or carers should normally be informed (unless this would put the victim at greater risk)
    - The basic safeguarding principle is: if a child is at risk of harm, is in immediate danger, or has been harmed, a referral should be made to local authority children's social care
    - Rape, assault by penetration and sexual assault are crimes. Where a report of rape, assault by penetration or sexual assault is made, this should be referred to the police.
- › Regarding anonymity, all staff will:
  - Be aware of anonymity, witness support, and the criminal process in general where an allegation of sexual violence or sexual harassment is progressing through the criminal justice system
  - Do all they reasonably can to protect the anonymity of any children involved in any report of sexual violence or sexual harassment, for example, carefully considering which staff should know about the report, and any support for children involved
  - Consider the potential impact of social media in facilitating the spreading of rumours and exposing victims' identities
- › The UK government's [information sharing advice for safeguarding practitioners](#) includes 7 'golden rules' for sharing information, and will support staff who have to make decisions about sharing information





- › If staff are in any doubt about sharing information, they should speak to the DSL (or deputy)
- › Confidentiality is also addressed in this policy with respect to record-keeping in section 14, and allegations of abuse against staff in appendix 3

## 7. Recognising abuse and taking action

Staff, volunteers, and governors must follow the procedures set out below in the event of a safeguarding issue.

Please note – in this and subsequent sections, you should take any references to the DSL to mean “the DSL (or deputy DSL)”.

### 7.1 If a child is suffering or likely to suffer harm, or in immediate danger

Inform the Headmaster or Executive Director **immediately in person or by phone** if you believe a child is suffering or likely to suffer from harm, or is in immediate danger. The Executive Director will inform the **police or relevant authorities**.

Tell the DSL via CPOMS in writing and in person orally (see section 5.2) as soon as possible if you make a referral directly to the Headmaster or Executive Director.

### 7.2 If a child makes a disclosure to you

If a child discloses a safeguarding issue to you, you should:

- › Listen to and believe them. Allow them time to talk freely and do not ask leading questions
- › Stay calm and do not show that you are shocked or upset
- › Tell the child they have done the right thing in telling you. Do not tell them they should have told you sooner
- › Explain what will happen next and that you will have to pass this information on. Do not promise to keep it a secret
- › Write up your conversation in CPOMS as soon as possible in the child’s own words. Stick to the facts, and do not put your own judgement on it
- › If CPOMS is not available and you need to write on paper, Sign and date the write-up and make an entry into CPOMS as soon as it is possible. Alternatively, if appropriate, make a referral to the Headmaster or Executive Director directly or if abroad, inform the local police directly (see 7.1), and tell the DSL as soon as possible that you have done so via CPOMS. Aside from these people, do not disclose the information to anyone else unless told to do so by a relevant authority involved in the safeguarding process

Bear in mind that some children may:

- › Not feel ready, or know how to tell someone that they are being abused, exploited or neglected
- › Not recognise their experiences as harmful
- › Feel embarrassed, humiliated or threatened. This could be due to their vulnerability, disability, sexual orientation and/or language barriers

None of this should stop you from having a ‘professional curiosity’ and speaking to the DSL if you have concerns about a child.

### 7.3 If you discover that FGM has taken place or a pupil is at risk of FGM

Keeping Children Safe in Education explains that FGM comprises “all procedures involving partial or total removal of the external female genitalia, or other injury to the female genital organs”.

FGM is illegal in the UK and a form of child abuse with long-lasting, harmful consequences. It is also known as ‘female genital cutting’, ‘circumcision’ or ‘initiation’.



Possible indicators that a pupil has already been subjected to FGM, and factors that suggest a pupil may be at risk, are set out in appendix 4 of this policy.

**Any teacher** who either:

- Is informed by a girl under 18 that an act of FGM has been carried out on her; or
- Observes physical signs which appear to show that an act of FGM has been carried out on a girl under 18 and they have no reason to believe that the act was necessary for the girl's physical or mental health or for purposes connected with labour or birth

Must immediately report this to DSL.

**Any other member of staff** who discovers that an act of FGM appears to have been carried out on a **pupil under 18** must speak to the DSL, who in turn will inform the Headmaster or Executive Director. The Executive Director will follow the relevant local safeguarding procedures.

The duty for teachers mentioned above does not apply in cases where a pupil is *at risk* of FGM or FGM is suspected, but is not known to have been carried out. Staff should not examine pupils.

### **7.4 If you have concerns about a child (as opposed to believing a child is suffering or likely to suffer from harm, or is in immediate danger)**

Where possible, speak to the DSL first to agree a course of action.

If in exceptional circumstances the DSL is not available, this should not delay appropriate action being taken. Speak to a member of the senior leadership team. Share details of any actions you take with the DSL as soon as practically possible.

#### **Referral**

If it is appropriate to refer the case to a local authority or the police, the Executive Director will make the referral.

If you make a referral directly (see section 7.1), you must tell the DSL as soon as possible via CPOMS.

### **7.5 If you have concerns about extremism**

If a child is not suffering or likely to suffer from harm, or in immediate danger, where possible speak to the DSL first to agree a course of action.

If in exceptional circumstances the DSL is not available, this should not delay appropriate action being taken. Speak to a member of the senior leadership team. Inform the DSL or deputy as soon as practically possible after the referral.

Where there is a concern, the DSL will consider the level of risk and inform the Headmaster or Executive Director if they:

- › Think someone is in immediate danger
- › Think someone may be planning to travel to join an extremist group
- › See or hear something that may be terrorist-related

### **7.6 If you have a mental health concern**

Mental health problems can, in some cases, be an indicator that a child has suffered or is at risk of suffering abuse, neglect or exploitation.

Staff will be alert to behavioural signs that suggest a child may be experiencing a mental health problem or be at risk of developing one.

If you have a mental health concern about a child that is also a safeguarding concern, take immediate action by following the steps in section 7.4.

If you have a mental health concern that is **not** also a safeguarding concern, make a report using CPOMS and if possible speak to the DSL to agree a course of action.

Refer to the Department for Education guidance on [mental health and behaviour in schools](#) for more information

### **7.7 Concerns about a staff member, supply teacher, volunteer, or contractor**

If you have concerns about a member of staff (including a supply teacher, volunteer, or contractor), or an allegation is made about a member of staff (including a supply teacher, volunteer, or contractor) posing a risk of harm to children, speak to the Headmaster as soon as possible. If the concerns/allegations are about the Headmaster, speak to Executive Director.

The Headmaster /Executive Director will then follow the procedures set out in appendix 3, if appropriate.

Where you believe there is a conflict of interest in reporting a concern or allegation about a member of staff (including a supply teacher, volunteer, or contractor) to the Headmaster, report it directly to the Executive Director.

### **7.8 Allegations of abuse made against other pupils**

We recognise that children are capable of abusing their peers. Abuse will never be tolerated or passed off as “banter”, “just having a laugh” or “part of growing up”, as this can lead to a culture of unacceptable behaviours and an unsafe environment for pupils.

We also recognise the gendered nature of child-on-child abuse. However, all child-on-child abuse is unacceptable and will be taken seriously.

Most cases of pupils hurting other pupils will be dealt with under our school’s Behaviour for Learning Policy, but this Child Protection and Safeguarding Policy will apply to any allegations that raise safeguarding concerns. This might include where the alleged behaviour:

- › Is serious, and potentially a criminal offence
- › Could put pupils in the school at risk
- › Is violent
- › Involves pupils being forced to use drugs or alcohol
- › Involves sexual exploitation, sexual abuse or sexual harassment, such as indecent exposure, sexual assault, upskirting or sexually inappropriate pictures or videos (including the sharing of nudes and semi-nudes)

See appendix 4 for more information about child-on-child abuse.

### **Procedures for dealing with allegations of child-on-child abuse**

If a pupil makes an allegation of abuse against another pupil:

- › You must record the allegation via CPOMS and tell the DSL if possible, but do not investigate it
- › The DSL will inform the Headmaster and Executive Director, and the Executive Director will inform the police or relevant authorities as appropriate.
- › The DSL will put a risk assessment and support plan into place for all children involved (including the victim(s), the child(ren) against whom the allegation has been made and any others affected) with Headmaster and Executive Director informed.
- › The Headmaster will contact the parents and the Executive Director the relevant authorities or police as appropriate

If the incident is a criminal offence and there are delays in the criminal process, the Executive Director will work closely with the police (and other agencies as required) while protecting children and/or taking any disciplinary measures against the alleged perpetrator.

### **Creating a supportive environment in school and minimising the risk of child-on-child abuse**

We recognise the importance of taking proactive action to minimise the risk of child-on-child abuse, and of creating a supportive environment where victims feel confident in reporting incidents.

To achieve this, we will:

- › Challenge any form of derogatory or sexualised language or inappropriate behaviour between peers, including requesting or sending sexual images
- › Be vigilant to issues that particularly affect different genders – for example, sexualised or aggressive touching or grabbing towards female pupils, and initiation or hazing type violence with respect to boys
- › Ensure our curriculum helps to educate pupils about appropriate behaviour and consent
- › Ensure pupils are able to easily and confidently report abuse to a member of staff
- › Ensure staff reassure victims that they are being taken seriously
- › Be alert to reports of sexual violence and/or harassment that may point to environmental or systemic problems that could be addressed by updating policies, processes and the curriculum, or could reflect wider issues in the local area that should be shared with safeguarding partners
- › Support children who have witnessed sexual violence, especially rape or assault by penetration. We will do all we can to make sure the victim, alleged perpetrator(s) and any witnesses are not bullied or harassed
- › Consider intra familial harms and any necessary support for siblings following a report of sexual violence and/or harassment
- › Ensure staff are trained to understand:
  - How to recognise the indicators and signs of child-on-child abuse, and know how to identify it and respond to reports
  - That even if there are no reports of child-on-child abuse in school, it does not mean it is not happening – staff should maintain an attitude of “it could happen here”
  - That if they have any concerns about a child’s welfare, they should act on them immediately rather than wait to be told, and that victims may not always make a direct report. For example:
    - Children can show signs or act in ways they hope adults will notice and react to
    - A friend may make a report
    - A member of staff may overhear a conversation
    - A child’s behaviour might indicate that something is wrong
  - That certain children may face additional barriers to telling someone because of their vulnerability, disability, gender, ethnicity and/or sexual orientation
  - That a pupil harming a peer could be a sign that the child is being abused themselves, and that this would fall under the scope of this policy
  - The important role they have to play in preventing child-on-child abuse and responding where they believe a child may be at risk from it
  - That they should speak to the DSL if they have any concerns

- That social media is likely to play a role in the fall-out from any incident or alleged incident, including for potential contact between the victim, alleged perpetrator(s) and friends from either side

The DSL will take the lead role in any disciplining of the alleged perpetrator(s). We will provide support at the same time as taking any disciplinary action.

Disciplinary action can be taken while other investigations are going on, e.g. by the police. The fact that another body is investigating or has investigated an incident doesn't (in itself) prevent our school from coming to its own conclusion about what happened and imposing a penalty accordingly.

### 7.9 Sharing of nudes and semi-nudes ('sexting')

This is a suggested approach based on [guidance from the UK Council for Internet Safety](#) for all staff and for DSLs and senior leaders.

#### Your responsibilities when responding to an incident

If you are made aware of an incident involving the consensual or non-consensual sharing of nude or semi-nude images/videos (also known as 'sexting' or 'youth produced sexual imagery'), you must report it to the DSL immediately via CPOMS and where possible in person.

You must **not**:

- › View, copy, print, share, store or save the imagery yourself, or ask a pupil to share or download it (if you have already viewed the imagery by accident, you must report this to the DSL)
- › Delete the imagery or ask the pupil to delete it
- › Ask the pupil(s) who are involved in the incident to disclose information regarding the imagery (this is the DSL's responsibility)
- › Share information about the incident with other members of staff, the pupil(s) it involves or their, or other, parents and/or carers
- › Say or do anything to blame or shame any young people involved

You should explain that you need to report the incident, and reassure the pupil(s) that they will receive support and help from the DSL.

#### Initial review meeting

Following a report of an incident, the DSL will hold an initial review meeting with appropriate school staff – this may include the staff member who reported the incident and the safeguarding or leadership team that deals with safeguarding concerns. This meeting will consider the initial evidence and aim to determine:

- › Whether there is an immediate risk to pupil(s)
- › If a referral needs to be made to Executive Director to inform the police
- › If it is necessary to view the image(s) in order to safeguard the young person (in most cases, images or videos should not be viewed)
- › What further information is required to decide on the best response
- › Whether the image(s) has been shared widely and via what services and/or platforms (this may be unknown)
- › Whether immediate action should be taken to delete or remove images or videos from devices or online services
- › Any relevant facts about the pupils involved which would influence risk assessment
- › If there is a need to contact another school, college, setting or individual
- › Whether to contact parents or carers of the pupils involved (in most cases parents/carers should be involved)

The DSL will inform the Headmaster and Executive Director, who will in turn inform the police if:

- › The incident involves an adult
- › There is reason to believe that a young person has been coerced, blackmailed or groomed, or if there are concerns about their capacity to consent (for example, owing to special educational needs)
- › What the DSL knows about the images or videos suggests the content depicts sexual acts which are unusual for the young person's developmental stage, or are violent
- › The imagery involves sexual acts and any pupil in the images or videos is under 13
- › The DSL has reason to believe a pupil is at immediate risk of harm owing to the sharing of nudes and semi-nudes (for example, the young person is presenting as suicidal or self-harming)

If none of the above apply then the DSL, in consultation with the Headmaster and other members of staff as appropriate, may decide to respond to the incident without involving the police. The decision will be made and recorded in line with the procedures set out in this policy.

### **Further review by the DSL**

If at the initial review stage a decision has been made not to refer to police and/or children's social care, the DSL will conduct a further review to establish the facts and assess the risks.

They will hold interviews with the pupils involved (if appropriate).

If at any point in the process there is a concern that a pupil has been harmed or is at risk of harm, a referral will be made to children's social care and/or the police immediately.

### **Informing parents/carers**

The DSL will inform parents/carers at an early stage and keep them involved in the process, unless there is a good reason to believe that involving them would put the pupil at risk of harm.

### **Referring to the police**

If it is necessary to refer an incident to the police, this will be done through the Executive Director

### **Recording incidents**

All incidents of sharing of nudes and semi-nudes, and the decisions made in responding to them, will be recorded on CPOMS. The record-keeping arrangements set out in section 14 of this policy also apply to recording these incidents.

### **Curriculum coverage**

Pupils are taught about the issues surrounding the sharing of nudes and semi-nudes as part of our relationships and sex education and child safeguarding focus within RSHE. Teaching covers the following in relation to the sharing of nudes and semi-nudes:

- › What it is
- › How it is most likely to be encountered
- › The consequences of requesting, forwarding or providing such images, including when it is and is not abusive and when it may be deemed as online sexual harassment
- › Issues of legality
- › The risk of damage to people's feelings and reputation

Pupils also learn the strategies and skills needed to manage:

- › Specific requests or pressure to provide (or forward) such images
- › The receipt of such images

This policy on the sharing of nudes and semi-nudes is also shared with pupils so they are aware of the processes the school will follow in the event of an incident.



### 7.10 Reporting systems for our pupils

Where there is a safeguarding concern, we will take the child's wishes and feelings into account when determining what action to take and what services to provide.

We recognise the importance of ensuring pupils feel safe and comfortable to come forward and report any concerns and/or allegations.

To achieve this, we will:

- › Put systems in place for pupils to confidently report abuse
- › Ensure our reporting systems are well promoted, easily understood, and easily accessible for pupils
- › Make it clear to pupils that their concerns will be taken seriously, and that they can safely express their views and give feedback

At the start of each year our PSHE programme focuses on areas relating to children safeguarding, informing students how to identify and respond to child safeguarding concerns. The Student counsellor in each school visits each class to inform all students who they are and what their role is and takes a lead in responding to concerns raised by staff via CPOMS, the Student counsellors also visit classes regularly to monitor and observe the students, and spend time outside during breaks for the same purpose. A student Counsellor Letter and Child Safeguarding Letter are sent home at the start of each school year, with the Child Protection and Safeguarding Policy attached. Pupils are encouraged to speak to a member of staff about any concerns they may have, or to visit the Student Counsellors office at any time. Students and parents are also informed of the email addresses of the student counsellors to be able to write to them directly. Parents are also provided with the phone number of the DSLs to be able to phone them directly.

## 8. Online safety and the use of mobiles or digital devices

We recognise the importance of safeguarding children from potentially harmful and inappropriate online material, and we understand that technology is a significant component in many safeguarding and wellbeing issues.

To address this, our school aims to:

- › Have robust processes in place to ensure the online safety of pupils, staff, volunteers, and governors
- › Protect and educate the whole school community in its safe and responsible use of technology, including mobile and smart technology (which we refer to as 'mobile phones')
- › Set clear guidelines for the use of mobile phones for the whole school community
- › Establish clear mechanisms to identify, intervene in and escalate any incidents or concerns, where appropriate

### The 4 key categories of risk

Our approach to online safety is based on addressing the following categories of risk:

- › **Content** – being exposed to illegal, inappropriate or harmful content, such as pornography, fake news, racism, misogyny, self-harm, suicide, antisemitism, radicalisation and extremism
- › **Contact** – being subjected to harmful online interaction with other users, such as peer-to-peer pressure, commercial advertising and adults posing as children or young adults with the intention to groom or exploit them for sexual, criminal, financial or other purposes
- › **Conduct** – personal online behaviour that increases the likelihood of, or causes, harm, such as making, sending and receiving explicit images (e.g. consensual and non-consensual sharing of nudes and semi-nudes and/or pornography), sharing other explicit images and online bullying; and
- › **Commerce** – risks such as online gambling, inappropriate advertising, phishing and/or financial scams



## To meet our aims and address the risks above we will:

- › Educate pupils about online safety as part of our curriculum. For example:
  - The safe use of social media, the internet, and technology
  - Keeping personal information private
  - How to recognise unacceptable behaviour online
  - How to report any incidents of cyber-bullying, ensuring pupils are encouraged to do so, including where they are a witness rather than a victim
- › Train staff, as part of their induction, on safe internet use and online safeguarding issues including cyber-bullying and the risks of online radicalisation. All staff members will receive refresher training at least once each academic year
- › Educate parents/carers about online safety via our website, communications sent directly to them and during parents' evenings. We will also share clear procedures with them so they know how to raise concerns about online safety
- › Make sure staff are aware of any restrictions placed on them with regards to the use of their mobile phone and cameras, for example that:
  - Staff are allowed to bring their personal phones to school for their own use, but will limit such use to non-contact time when pupils are not present
  - Staff will not take pictures or recordings of pupils on their personal phones or cameras
- › Make all pupils, parents/carers, staff, volunteers, and governors aware that they are expected to sign an agreement regarding the acceptable use of the internet in school, use of the school's ICT systems and use of their mobile and smart technology
- › Explain the sanctions we will use if a pupil is in breach of our policies on the acceptable use of the internet and mobile phones
- › Make sure all staff, pupils and parents/carers are aware that staff have the power to search pupils' digital devices
- › Put in place robust filtering and monitoring systems to limit children's exposure to the 4 key categories of risk (described above) from the school's IT systems
- › Carry out an annual review of our approach to online safety, supported by an annual risk assessment that considers and reflects the risks faced by our school community

This section summarises our approach to online safety and digital device use. For comprehensive details about our WS Esafety Policy and Whole School Computer, Personal Computer, Mobile Phone, & Internet Use Policy available on the server, on OneDrive, and in the staff and Parent Areas of the school website.

## 9. Notifying parents or carers

Where appropriate, we will discuss any concerns about a child with the child's parents or carers. The DSL will normally do this in the event of a suspicion or disclosure.

Other staff will only talk to parents or carers about any such concerns following consultation with the DSL.

If we believe that notifying the parents or carers would increase the risk to the child, we will discuss this with the Headmaster and Executive Director and agree on a course of action that best supports the student.

In the case of allegations of abuse made against other children, we will normally notify the parents or carers of all the children involved. We will think carefully about what information we provide about the other child involved, and when and inform the police as appropriate through the Executive Director.

The DSL will (this will be decided on a case-by-case basis):





- › Meet with the victim's parents or carers, with the victim, to discuss what's being put in place to safeguard them, and understand their wishes in terms of what support they may need and how the report will be progressed
- › Meet with the alleged perpetrator's parents or carers to discuss support for them, and what's being put in place that will impact them, e.g. moving them out of classes with the victim, and the reason(s) behind any decision(s)

### 10. Pupils with special educational needs, disabilities or health issues

We recognise that pupils with special educational needs (SEN) or disabilities or certain health conditions can face additional safeguarding challenges, and are 3 times more likely to be abused than their peers.

Additional barriers can exist when recognising abuse and neglect in this group, including:

- › Assumptions that indicators of possible abuse such as behaviour, mood and injury relate to the child's condition without further exploration
- › Pupils being more prone to peer group isolation or bullying (including prejudice-based bullying) than other pupils
- › The potential for pupils with SEN, disabilities or certain health conditions being disproportionately impacted by behaviours such as bullying, without outwardly showing any signs
- › Communication barriers and difficulties in managing or reporting these challenges

We offer extra pastoral support for these pupils. This includes:

- › 1-2-1 support in the form of a shadow if appropriate
- › 1-2-1 support from the student counsellor as needed

Any abuse involving pupils with SEND will require close liaison with the DSL (or deputy) and the SENCO.

### 11. Complaints and concerns about school safeguarding policies

#### 11.1 Complaints against staff

Complaints against staff that are likely to require a child protection investigation will be handled in accordance with our procedures for dealing with allegations of abuse made against staff (see appendix 3).

#### 11.2 Other complaints

Where there is a complaint, the school will follow the WS Complaint Policy.

#### 11.3 Whistle-blowing

IBSB has a clear Whistle Blowing Policy which outlines clear procedures for staff to follow should they have a child protection or child safeguarding concern about a colleague.

### 12. Record-keeping

We will hold records in line with our records retention schedule.

All safeguarding concerns, discussions, decisions made and the reasons for those decisions, must be recorded in writing on CPOMS. If you are in any doubt about whether to record something, discuss it with the DSL.

Records will include:

- › A clear and comprehensive summary of the concern
- › Details of how the concern was followed up and resolved



- › A note of any action taken, decisions reached and the outcome

Confidential information and records will be held securely on CPOMS and only available to those who have a right or professional need to see them.

Safeguarding records relating to individual children will be retained for a reasonable period of time after they have left the school.

Safeguarding records which contain information about allegations of sexual abuse will be retained for the term of the inquiry.

If a child for whom the school has, or has had, safeguarding concerns moves to another school, the DSL will ensure that their child protection file is forwarded as soon as possible, securely, and separately from the main pupil file.

To allow the new school/college to have support in place when the child arrives, this should be within:

- › **5 days** for an in-year transfer, or within
- › **The first 5 days** of the start of a new term

In addition, if the concerns are significant or complex, the DSL will speak to the DSL of the receiving school and provide information to enable them to have time to make any necessary preparations to ensure the safety of the child.

In addition:

- › Appendix 2 sets out our policy on record-keeping specifically with respect to recruitment and pre-appointment checks
- › Appendix 3 sets out our policy on record-keeping with respect to allegations of abuse made against staff

## 13. Training

### 13.1 All staff

All staff members will undertake safeguarding and child protection training prior to induction through online training courses and at induction directly from the DSL, including training on whistle-blowing procedures and online safety, to ensure they understand the school's safeguarding systems and their responsibilities, and can identify signs of possible abuse or neglect.

This training will be regularly updated and will:

- › Be integrated, aligned and considered as part of the whole-school safeguarding approach and wider staff training, and curriculum planning
- › Have regard to the Teachers' Standards to support the expectation that all teachers:
  - Manage behaviour effectively to ensure a good and safe environment
  - Have a clear understanding of the needs of all pupils

All staff will have training on anti-radicalisation strategy, Prevent, to enable them to identify children at risk of being drawn into terrorism and to challenge extremist ideas.

Staff will also receive regular safeguarding and child protection updates, including on online safety, as required but at least annually (for example, through emails, e-bulletins and staff meetings).

Volunteers will receive appropriate training, if applicable.

### 13.2 The DSL and Deputy

The DSLs and Student Counsellors will undertake child protection and safeguarding training at least every 2 years.

In addition, they will update their knowledge and skills at regular intervals and at least annually (for example, through e-bulletins, meeting other DSLs, or taking time to read and digest safeguarding developments).

They will also undertake Prevent awareness training.

### 13.3 Governors

All members of SLT receive training about safeguarding and child protection (including online safety) at induction, which is regularly updated. This is to make sure that they:

- › Have the knowledge and information needed to perform their functions and understand their responsibilities, such as providing strategic challenge
- › Can be assured that safeguarding policies and procedures are effective and support the school to deliver a robust whole-school approach to safeguarding

As the Executive Director may be required to act as the 'case manager' in the event that an allegation of abuse is made against the Headmaster, they receive training in managing allegations for this purpose.

### 13.4 Recruitment – interview panels

The Head of HR and all members of the SLT directly involved in the recruitment process complete Safer Recruitment Training each year in addition to reading KCSIE Section 4.

See appendix 2 of this policy for more information about our safer recruitment procedures.

### 13.5 Staff who have contact with pupils and families

All staff who have contact with children and families will receive appropriate training and support to be able to interact in an appropriate manner to ensure the wellbeing of our students and families.

## 14. Monitoring arrangements

The DSLs are responsible for ensuring the annual review of this policy in accordance with changes in UK and EU/Romanian law.

The Board will meet once a year to review the IBSB Child Safeguarding Policy and to make recommendations in line with current law and safe practice.

This policy requires that any found deficiencies or weaknesses in Child Safeguarding arrangements are remedied without delay.

## 15. Links with other policies

PS/SS Curriculum Policy  
Staff Internal Regulations  
Staff Code of Conduct Policy  
Staff Whistle Blowing Policy  
Staff Safer Recruitment and Contract Renewal Policy  
Staff Recruitment of Ex-Offenders Policy  
Staff Performance Review and Capability Policy  
WS Anti-bullying Policy  
WS Esafety Policy  
WS First Aid Policy  
WS Health and Safety Policy  
WS Medical Policy  
WS Missing and Lost Student Policy  
WS Positive Handling Policy  
WS Use of Digital Technology Policy



Document Control		
Edit Completed	August 2024	
Author	Roy Chambers	Deputy Head of Secondary, Pastoral, SS DSL
Draft Approval	Kendall Peet	Headmaster
Signed off by	SLT	
Review Date	August 2025	
Review cycle	1 year	

These appendices are based on the Department for Education's statutory guidance, *Keeping Children Safe in Education*.

## Appendix 1: types of abuse

**Abuse**, including neglect, and safeguarding issues are rarely standalone events that can be covered by 1 definition or label. In most cases, multiple issues will overlap.

**Physical abuse** may involve hitting, shaking, throwing, poisoning, burning or scalding, drowning, suffocating or otherwise causing physical harm to a child. Physical harm may also be caused when a parent or carer fabricates the symptoms of, or deliberately induces, illness in a child.

**Emotional abuse** is the persistent emotional maltreatment of a child such as to cause severe and adverse effects on the child's emotional development. Some level of emotional abuse is involved in all types of maltreatment of a child, although it may occur alone.

Emotional abuse may involve:

- › Conveying to a child that they are worthless or unloved, inadequate, or valued only insofar as they meet the needs of another person
- › Not giving the child opportunities to express their views, deliberately silencing them or 'making fun' of what they say or how they communicate
- › Age or developmentally inappropriate expectations being imposed on children. These may include interactions that are beyond a child's developmental capability, as well as overprotection and limitation of exploration and learning, or preventing the child participating in normal social interaction
- › Seeing or hearing the ill-treatment of another
- › Serious bullying (including cyber-bullying), causing children frequently to feel frightened or in danger, or the exploitation or corruption of children

**Sexual abuse** involves forcing or enticing a child or young person to take part in sexual activities, not necessarily involving a high level of violence, whether or not the child is aware of what is happening. The activities may involve:

- › Physical contact, including assault by penetration (for example, rape or oral sex) or non-penetrative acts such as masturbation, kissing, rubbing and touching outside of clothing
- › Non-contact activities, such as involving children in looking at, or in the production of, sexual images, watching sexual activities, encouraging children to behave in sexually inappropriate ways, or grooming a child in preparation for abuse (including via the internet)

Sexual abuse is not solely perpetrated by adult males. Women can also commit acts of sexual abuse, as can other children.

**Neglect** is the persistent failure to meet a child's basic physical and/or psychological needs, likely to result in the serious impairment of the child's health or development. Neglect may occur during pregnancy as a result of maternal substance abuse.

Once a child is born, neglect may involve a parent or carer failing to:

- › Provide adequate food, clothing and shelter (including exclusion from home or abandonment)
- › Protect a child from physical and emotional harm or danger
- › Ensure adequate supervision (including the use of inadequate care-givers)
- › Ensure access to appropriate medical care or treatment

It may also include neglect of, or unresponsiveness to, a child's basic emotional needs.



## Appendix 2: safer recruitment and DBS checks – policy and procedures

### Recruitment and selection process

To make sure we recruit suitable people, we will ensure that those involved in the recruitment and employment of staff to work with children have received appropriate safer recruitment training.

We have put the following steps in place during our recruitment and selection process to ensure we are committed to safeguarding and promoting the welfare of children.

### Advertising

When advertising roles, we will make clear:

- › Our school's commitment to safeguarding and promoting the welfare of children
- › That safeguarding checks will be undertaken
- › The safeguarding requirements and responsibilities of the role, such as the extent to which the role will involve contact with children

### Application forms

Our online recruitment page and/or application forms will:

- › Include a statement saying that it is an offence to apply for the role if an applicant is barred from engaging in regulated activity relevant to children (where the role involves this type of regulated activity)
- › Include a copy of, or link to, our child protection and safeguarding policy and our policy on the employment of ex-offenders

### Shortlisting

Our shortlisting process will involve at least 2 people and will:

- › Consider any inconsistencies and look for gaps in employment and reasons given for them
- › Explore all potential concerns

Once we have shortlisted candidates, we will ask shortlisted candidates to:

- › Complete a self-declaration of their criminal record or any information that would make them unsuitable to work with children, so that they have the opportunity to share relevant information and discuss it at interview stage. The information we will ask for includes:
  - If they have a criminal history
  - Whether they are included on the barred list
  - Whether they are prohibited from teaching
  - Information about any criminal offences committed in any country in line with the law as applicable in England and Wales
  - Any relevant overseas information
- › Sign a declaration confirming the information they have provided is true

We will also carry out an online search on shortlisted candidates to help identify any incidents or issues that are publicly available online.

### Seeking references and checking employment history

We will seek to obtain three references from a legitimate school work email account (not personal email account) before the second interview. Any concerns raised will be explored further with referees and taken up with the candidate at interview.

When seeking references we will:



- › Not accept open references
- › Liaise directly with referees and verify any information contained within references with the referees
- › Ensure any references are from the candidate's current employer are completed by a senior person. Where the referee is school based, we will ask for the reference to be confirmed by the Headmaster /principal as accurate in respect to disciplinary investigations
- › Obtain verification of the candidate's most recent relevant period of employment if they are not currently employed
- › Secure a reference from the relevant employer from the last time the candidate worked with children if they are not currently working with children
- › Seek to cover the last five years of teaching where possible or relevant
- › Compare the information on the application form with that in the reference and take up any inconsistencies with the candidate
- › Resolve any concerns before any appointment is confirmed

### Interview and selection

When interviewing candidates, we will:

- › Probe any gaps in employment, or where the candidate has changed employment or location frequently, and ask candidates to explain this
- › Explore any potential areas of concern to determine the candidate's suitability to work with children
- › Record all information considered and decisions made

### Pre-appointment vetting checks

We will record all information on the checks carried out in the school's single central record (SCR). Copies of these checks, where appropriate, will be held in individuals' personnel files. We follow requirements and best practice in retaining copies of these checks, as set out below.

### New staff

All offers of appointment will be conditional until satisfactory completion of the necessary pre-employment checks. When appointing new staff, we will:

- › Verify their identity
- › Obtain (via the applicant) an enhanced DBS certificate, including barred list information for those who will be engaging in regulated activity (see definition below). We will obtain the certificate before, or as soon as practicable after, appointment, including when using the DBS update service. We will not keep a copy of the certificate for longer than 6 months, but when the copy is destroyed we may still keep a record of the fact that vetting took place, the result of the check and recruitment decision taken
- › Obtain a separate barred list check if they will start work in regulated activity before the DBS certificate is available
- › Verify their mental and physical fitness to carry out their work responsibilities
- › Verify their right to work in the EU. We will keep a copy of this verification for the duration of the member of staff's employment and for 2 years afterwards
- › Verify their professional qualifications, as appropriate
- › Ensure they are not subject to a prohibition order if they are employed to be a teacher
- › Carry out further additional checks, as appropriate, on candidates who have lived or worked outside Romania:
  - For all staff, including teaching positions: [criminal records checks for overseas applicants](#)





- For teaching positions: obtaining a police check from the country where the applicant has worked, confirming that they have not imposed any sanctions or restrictions on that person, and/or are aware of any reason why that person may be unsuitable to teach
- Check that candidates taking up a management position\* are not subject to a prohibition from management (section 128) direction made by the secretary of state through the AoBSO prohibition check process \* Management positions include, but are not limited to head teachers and deputy heads.

**Regulated activity** means a person who will be:

- › Responsible, on a regular basis in a school or college, for teaching, training, instructing, caring for or supervising children; or
- › Carrying out paid, or unsupervised unpaid, work regularly in a school or college where that work provides an opportunity for contact with children; or
- › Engaging in intimate or personal care or overnight activity, even if this happens only once and regardless of whether they are supervised or not

### Existing staff

In certain circumstances we will carry out all the relevant checks on existing staff as if the individual was a new member of staff. These circumstances are when:

- › There are concerns about an existing member of staff's suitability to work with children; or
- › An individual moves from a post that is not regulated activity to one that is; or
- › There has been a break in service of 12 weeks or more

We will refer to the DBS anyone who has harmed, or poses a risk of harm, to a child or vulnerable adult where:

- › We believe the individual has engaged in [relevant conduct](#); or
- › We believe the individual has received a caution or conviction for a relevant (automatic barring either with or without the right to make representations) offence, under the [Safeguarding Vulnerable Groups Act 2006 \(Prescribed Criteria and Miscellaneous Provisions\) Regulations 2009](#); or
- › We believe the 'harm test' is satisfied in respect of the individual (i.e. they may harm a child or vulnerable adult or put them at risk of harm); and
- › The individual has been removed from working in regulated activity (paid or unpaid) or would have been removed if they had not left

### Agency and third-party staff

We will obtain written notification from any agency or third-party organisation that it has carried out the necessary safer recruitment checks that we would otherwise perform. We will also check that the person presenting themselves for work is the same person on whom the checks have been made.

### Contractors

We will ensure that any all contractors or visitors on campus during school hours are accompanied by a member of staff at all times.

We will check the identity of all contractors and their staff on arrival at the school and ensure they complete the visitor check in procedure.

For self-employed contractors such as music teachers or sports coaches, we will ensure that appropriate checks are carried out to ensure that individuals are not barred for working with children.



### **QTS Trainees/ECT teachers**

Where applicants for QTS or ECT are salaried by us, we will ensure that all necessary checks are carried out.

### **Volunteers**

We will:

- › Carry out a risk assessment for any situation where volunteers are not engaged in regulated activity and will retain a record of this risk assessment.
- › Never leave an unchecked volunteer unsupervised or allow them to work in regulated activity
- › Obtain an ICPC or appropriate check for all volunteers who are new to working in regulated activity

### **Staff working in alternative provision settings**

Where we place a pupil with an alternative provision provider, we will confirm that the provider is aware of their safeguarding responsibility and that the students are prepared to engage in with the third party in a safe manner.

### **Adults who supervise pupils on work experience**

When organising work experience, we will ensure that policies and procedures are in place to protect children from harm.

### **Pupils staying with host families**

Where the school makes arrangements for pupils to be provided with care and accommodation by a host family to which they are not related (for example, during a foreign exchange visit), we will request that the host school ensures the safety of the student being hosted.

## Appendix 3: allegations of abuse made against staff

### Section 1: allegations that may meet the harms threshold

This section is based on 'Section 1: Allegations that may meet the harms threshold' in part 4 of Keeping Children Safe in Education.

This section applies to all cases in which it is alleged that a current member of staff, including a supply teacher, volunteer or contractor, has:

- › Behaved in a way that has harmed a child, or may have harmed a child, and/or
- › Possibly committed a criminal offence against or related to a child, and/or
- › Behaved towards a child or children in a way that indicates they may pose a risk of harm to children, and/or
- › Behaved or may have behaved in a way that indicates they may not be suitable to work with children – this includes behaviour taking place both inside and outside of school

If we're in any doubt as to whether a concern meets the harm threshold, we will refer to Executive Director.

We will deal with any allegation of abuse quickly, in a fair and consistent way that provides effective child protection while also supporting the individual who is the subject of the allegation.

A 'case manager' will lead any investigation. This will be the Headmaster, or the Executive Director where the Headmaster is the subject of the allegation. The case manager will be identified at the earliest opportunity.

Our procedures for dealing with allegations will be applied with common sense and judgement.

### Suspension of the accused until the case is resolved

Suspension of the accused will not be the default position, and will only be considered in cases where there is reason to suspect that a child or other children is/are at risk of harm, or the case is so serious that there might be grounds for dismissal. In such cases, we will only suspend an individual if we have considered all other options available and there is no reasonable alternative.

Based on an assessment of risk, we will consider alternatives such as:

- › Redeployment within the school so that the individual does not have direct contact with the child or children concerned
- › Redeploying the individual to alternative work in the school so that they do not have unsupervised access to children
- › Moving the child or children to classes where they will not come into contact with the individual, making it clear that this is not a punishment and parents/carers have been consulted

If in doubt, the case manager will seek view of the Executive Director.

### Definitions for outcomes of allegation investigations

- › **Substantiated:** there is sufficient evidence to prove the allegation
- › **Malicious:** there is sufficient evidence to disprove the allegation and there has been a deliberate act to deceive, or to cause harm to the subject of the allegation
- › **False:** there is sufficient evidence to disprove the allegation
- › **Unsubstantiated:** there is insufficient evidence to either prove or disprove the allegation (this does not imply guilt or innocence)
- › **Unfounded:** to reflect cases where there is no evidence or proper basis which supports the allegation being made

## Procedure for dealing with allegations

In the event of an allegation that meets the criteria above, the case manager will take the following steps:

- › Conduct basic enquiries in line with local procedures to establish the facts to help determine whether there is any foundation to the allegation before carrying on with the steps below
- › Discuss the allegation with the SLT. This is to consider the nature, content, and context of the allegation and agree a course of action, including whether further enquiries are necessary to enable a decision on how to proceed, and whether it is necessary to involve the police and/or children's social care services.
- › Inform the accused individual of the concerns or allegations and likely course of action as soon as possible after speaking with the Executive Director. Where the police or appropriate agency is involved, the case manager will only share such information with the individual as has been agreed with the police
- › Where appropriate (in the circumstances described above), carefully consider whether suspension of the individual from contact with children at the school is justified or whether alternative arrangements such as those outlined above can be put in place.
- › Where the case manager is concerned about the welfare of other children in the community or the individual's family, they will discuss these concerns with Executive Director and DSL and make a risk assessment of the situation.
- › **If immediate suspension is considered necessary**, agree and record the rationale for this with the Head of HR. The record will include information about the alternatives to suspension that have been considered, and why they were rejected. Written confirmation of the suspension will be provided to the individual facing the allegation or concern within 1 working day, and the individual will be given a named contact at the school and their contact details.
- › **If it is decided that no further action is to be taken** in regard to the subject of the allegation or concern, record this decision on CPOMS and the justification for it and agree with the designated officer what information should be put in writing to the individual and by whom, as well as what action should follow both in respect of the individual and those who made the initial allegation
- › **If it is decided that further action is needed**, take steps as agreed with the Executive Director to initiate the appropriate action in school and/or liaise with the police as appropriate
- › Provide effective support for the individual facing the allegation or concern, including appointing a named representative to keep them informed of the progress of the case and considering what other support is appropriate.
- › Inform the parents or carers of the child/children involved about the allegation as soon as possible if they do not already know (following agreement with the police, if applicable). The case manager will also inform the parents or carers of the requirement to maintain confidentiality about any allegations made against teachers (where this applies) while investigations are ongoing. Any parent or carer who wishes to have the confidentiality restrictions removed in respect of a teacher will be advised to seek legal advice
- › Keep the parents or carers of the child/children involved informed of the progress of the case (only in relation to their child – no information will be shared regarding the staff member)
- › Make a referral to the Romanian Police/ICPC where it is thought that the individual facing the allegation or concern has engaged in conduct that harmed or is likely to harm a child, or if the individual otherwise poses a risk of harm to a child

## Additional considerations for supply teachers and all contracted staff

If there are concerns or an allegation is made against someone not directly employed by the school, such as a supply teacher or contracted staff member provided by an agency, we will take the actions below in addition to our standard procedures.

- › We will not decide to stop using an individual due to safeguarding concerns without finding out the facts to determine a suitable outcome

- › The Headmaster will discuss with the Executive Director whether it is appropriate to suspend the individual while the school carries out the investigation
- › We will address issues such as information sharing, to ensure any previous concerns or allegations known to the agency are taken into account (we will do this, for example, as part of the allegations management meeting or by liaising directly with the agency where necessary)

When using an agency, we will inform them of our process for managing allegations, and keep them updated about our policies as necessary, and will invite the agency's HR manager or equivalent to meetings as appropriate.

### **Timescales**

We will deal with all allegations as quickly and effectively as possible and will endeavour to comply with the following timescales, where reasonably practicable:

- › Any cases where it is clear immediately that the allegation is unsubstantiated or malicious should be resolved within 1 week
- › If the nature of an allegation does not require formal disciplinary action, appropriate action should be taken within 3 working days
- › If a disciplinary hearing is required and can be held without further investigation, this should be held within 15 working days

However, these are objectives only and where they are not met, we will endeavour to take the required action as soon as possible thereafter.

### **Specific actions**

#### **Action following a criminal investigation or prosecution**

The Headmaster will discuss with the Executive Director whether any further action, including disciplinary action, is appropriate and, if so, how to proceed.

#### **Conclusion of a case where the allegation is substantiated**

If the allegation is substantiated and the individual is dismissed or the school ceases to use their services, or the individual resigns or otherwise ceases to provide their services, the school will make a referral to the ICPC for consideration of whether inclusion on the barred lists is required.

If the individual concerned is a member of teaching staff, the school will consider whether to refer the matter to the relevant Teaching Regulation Agency to consider prohibiting the individual from teaching.

#### **Individuals returning to work after suspension**

If it is decided on the conclusion of a case that an individual who has been suspended can return to work, the case manager will consider how best to facilitate this.

The case manager will also consider how best to manage the individual's contact with the child or children who made the allegation, if they are still attending the school.

#### **Unsubstantiated, unfounded, false or malicious reports**

If a report is:

- › Determined to be unsubstantiated, unfounded, false, or malicious, the Headmaster and Executive Director will consider the appropriate next steps. If they consider that the child and/or person who made the allegation is in need of help, or the allegation may have been a cry for help, a referral to student counselor and possible outside support may be requested.
- › Shown to be deliberately invented, or malicious, the school will consider whether any disciplinary action is appropriate against the individual(s) who made it, including ending the student's registration.

## Unsubstantiated, unfounded, false or malicious allegations

If an allegation is:

- › Determined to be unsubstantiated, unfounded, false or malicious, the Headmaster and Executive Director will consider the appropriate next steps. If they consider that the child and/or person who made the allegation is in need of help, or the allegation may have been a cry for help, a referral to student counselor and possible outside support may be requested.
- › Shown to be deliberately invented, or malicious, the school will consider whether any disciplinary action is appropriate against the individual(s) who made it including ending the student's registration.

## Confidentiality and information sharing

The school will make every effort to maintain confidentiality and guard against unwanted publicity while an allegation is being investigated or considered.

The case manager will consider:

- Who needs to know about the allegation and what information can be shared
- How to manage speculation, leaks and gossip, including how to make parents or carers of a child/children involved aware of their obligations with respect to confidentiality
- What, if any, information can be reasonably given to the wider community to reduce speculation
- How to manage press interest if, and when, it arises

## Record-keeping

The case manager will maintain clear records on CPOMS about any case where the allegation or concern meets the criteria above.

The records of any allegation that, following an investigation, is found to be malicious or false will be deleted from the individual's personnel file (unless the individual consents for the records to be retained on the file).

For all other allegations (which are not found to be malicious or false), the following information will be kept on the file of the individual concerned:

- A clear and comprehensive summary of the allegation
- Details of how the allegation was followed up and resolved
- Notes of any action taken, decisions reached and the outcome
- A declaration on whether the information will be referred to in any future reference

In these cases, the school will provide a copy to the individual.

Where records contain information about allegations of sexual abuse, we will preserve these for the term of the inquiry. We will retain all other records for 10 years from the date of the allegation if that is longer.

## References

When providing employer references, we will:

- › Not refer to any allegation that has been found to be false, unfounded, unsubstantiated or malicious, or any repeated allegations which have all been found to be false, unfounded, unsubstantiated or malicious
- › Include substantiated allegations, provided that the information is factual and does not include opinions

## Learning lessons

After any cases where the allegations are *substantiated*, the case manager will review the circumstances of the case with the local authority's designated officer to determine whether there are any improvements that we can make to the school's procedures or practice to help prevent similar events in the future.



This will include consideration of (as applicable):

- Issues arising from the decision to suspend the member of staff
- The duration of the suspension
- Whether or not the suspension was justified
- The use of suspension when the individual is subsequently reinstated. We will consider how future investigations of a similar nature could be carried out without suspending the individual

For all other cases, the case manager will consider the facts and determine whether any improvements can be made.

## Non-recent allegations

Abuse can be reported, no matter how long ago it happened.

We will report any non-recent allegations to the appropriate authorities.

Where an adult makes an allegation to the school that they were abused as a child, we will advise the individual to report the allegation to the police.

## Section 2: concerns that do not meet the harm threshold

The section is based on 'Section 2: Concerns that do not meet the harm threshold' in part 4 of Keeping Children Safe in Education.

This section applies to all concerns (including allegations) about members of staff, including supply teachers, volunteers, and contractors, which do not meet the harm threshold set out in section 1 above.

Concerns may arise through, for example:

- › Suspicion
- › Complaint
- › Safeguarding concern or allegation from another member of staff
- › Disclosure made by a child, parent or other adult within or outside the school
- › Pre-employment vetting checks

We recognise the importance of responding to and dealing with any concerns in a timely manner to safeguard the welfare of children.

## Definition of low-level concerns

The term 'low-level' concern is any concern – no matter how small – that an adult working in or on behalf of the school may have acted in a way that:

- › Is inconsistent with the staff code of conduct, including inappropriate conduct outside of work, **and**
- › Does not meet the allegations threshold or is otherwise not considered serious enough to consider a referral to the police or appropriate local authority.

Examples of such behaviour could include, but are not limited to:

- › Being overly friendly with children
- › Having favourites
- › Taking photographs of children on their mobile phone
- › Engaging with a child on a one-to-one basis in a secluded area or behind a closed door
- › Humiliating pupils



## Sharing low-level concerns

We recognise the importance of creating a culture of openness, trust and transparency to encourage all staff to confidentially share low-level concerns so that they can be addressed appropriately.

We will create this culture by:

- › Ensuring staff are clear about what appropriate behaviour is, and are confident in distinguishing expected and appropriate behaviour from concerning, problematic or inappropriate behaviour, in themselves and others
- › Empowering staff to share any low-level concerns as per section 7.7 of this policy
- › Empowering staff to self-refer
- › Addressing unprofessional behaviour and supporting the individual to correct it at an early stage
- › Providing a responsive, sensitive and proportionate handling of such concerns when they are raised
- › Helping to identify any weakness in the school's safeguarding system

## Responding to low-level concerns

If the concern is raised via a third party, the Headmaster will collect evidence where necessary by speaking:

- › Directly to the person who raised the concern, unless it has been raised anonymously
- › To the individual involved and any witnesses

The Headmaster will use the information collected to categorise the type of behaviour and determine any further action, in line with the school's Staff Code of Conduct and Internal Regulations. The Headmaster will be the ultimate decision-maker in respect of all low-level concerns, though will collaborate with the SLT and Executive Director.

## Record keeping

All low-level concerns will be recorded in writing on CPOMS. In addition to details of the concern raised, records will include the context in which the concern arose, any action taken and the rationale for decisions and action taken.

Records will be:

- › Kept confidential, held securely and comply with GDPR.
- › Reviewed so that potential patterns of concerning, problematic or inappropriate behaviour can be identified. Where a pattern of such behaviour is identified, we will decide on a course of action, either through our disciplinary procedures or, where a pattern of behaviour moves from a concern to meeting the harms threshold as described in section 1 of this appendix, we will refer it to the designated officer at the local authority
- › Retained at least until the individual leaves employment at the school

Where a low-level concern relates to a supply teacher or contractor, we will notify the individual's employer, so any potential patterns of inappropriate behaviour can be identified.

## References

We will not include low-level concerns in references unless:

- › The concern (or group of concerns) is found to be substantiated; and/or
- › The concern (or group of concerns) relates to issues which would ordinarily be included in a reference, such as misconduct or poor performance

## Appendix 4: specific safeguarding issues

### Children missing from education

A child going missing from education, particularly repeatedly, can be a warning sign of a range of safeguarding issues. This might include abuse or neglect, such as sexual abuse or exploitation or child criminal exploitation, or issues such as mental health problems, substance abuse, radicalisation, FGM or forced marriage.

There are many circumstances where a child may become missing from education, but some children are particularly at risk. These include children who:

- › Are at risk of harm or neglect
- › Are at risk of forced marriage or FGM
- › Go missing or run away from home or care

We will follow our procedures for unauthorised absence and for dealing with children who go missing from education, particularly on repeat occasions, to help identify the risk of abuse and neglect, including sexual exploitation, and to help prevent the risks of going missing in future.

Staff will be trained in signs to look out for and the individual triggers to be aware of when considering the risks of potential safeguarding concerns which may be related to being missing, such as travelling to conflict zones, FGM, and forced marriage.

If a staff member suspects that a child is suffering from harm or neglect, we will follow our child protection procedures, including with respect to making reasonable enquiries. We will make an immediate referral to parents and if appropriate the police, if the child is suffering or likely to suffer from harm, or in immediate danger.

### Child criminal exploitation

Child criminal exploitation (CCE) is a form of abuse where an individual or group takes advantage of an imbalance of power to coerce, control, manipulate or deceive a child into criminal activity, in exchange for something the victim needs or wants, and/or for the financial or other advantage of the perpetrator or facilitator, and/or through violence or the threat of violence.

The abuse can be perpetrated by males or females, and children or adults. It can be a one-off occurrence or a series of incidents over time, and range from opportunistic to complex organised abuse.

The victim can be exploited even when the activity appears to be consensual. It does not always involve physical contact and can happen online. For example, young people may be forced to work in cannabis factories, coerced into moving drugs or money across the country (county lines), forced to shoplift or pickpocket, or to threaten other young people.

Indicators of CCE can include a child:

- › Appearing with unexplained gifts or new possessions
- › Associating with other young people involved in exploitation
- › Suffering from changes in emotional wellbeing
- › Misusing drugs and alcohol
- › Going missing for periods of time or regularly coming home late
- › Regularly missing school or education
- › Not taking part in education

If a member of staff suspects CCE, they will discuss this with the DSL. The DSL will trigger the local safeguarding procedures, including a referral to the local authority's children's social care team and the police, if appropriate.

### Child sexual exploitation

Child sexual exploitation (CSE) is a form of child sexual abuse where an individual or group takes advantage of an imbalance of power to coerce, manipulate or deceive a child into sexual activity, in exchange for something the victim needs or wants and/or for the financial advantage or increased status of the perpetrator or facilitator. It may, or may not, be accompanied by violence or threats of violence.

The abuse can be perpetrated by males or females, and children or adults. It can be a one-off occurrence or a series of incidents over time, and range from opportunistic to complex organised abuse.

The victim can be exploited even when the activity appears to be consensual. Children or young people who are being sexually exploited may not understand that they are being abused. They often trust their abuser and may be tricked into believing they are in a loving, consensual relationship.

CSE can include both physical contact (penetrative and non-penetrative acts) and non-contact sexual activity. It can also happen online. For example, young people may be persuaded or forced to share sexually explicit images of themselves, have sexual conversations by text, or take part in sexual activities using a webcam. CSE may also occur without the victim's immediate knowledge, for example through others copying videos or images.

In addition to the CCE indicators above, indicators of CSE can include a child:

- › Having an older boyfriend or girlfriend
- › Suffering from sexually transmitted infections or becoming pregnant

If a member of staff suspects CSE, they will discuss this with the DSL. The DSL will trigger the local safeguarding procedures, including a referral to the local authority's children's social care team and the police, if appropriate.

### Child-on-child abuse

Child-on-child abuse is when children abuse other children. This type of abuse can take place inside and outside of school. It can also take place both face-to-face and online, and can occur simultaneously between the 2.

Our school has a zero-tolerance approach to bullying, sexual violence, and sexual harassment. We recognise that even if there are no reports, that doesn't mean that this kind of abuse isn't happening.

Child-on-child abuse is most likely to include, but may not be limited to:

- › Bullying (including cyber-bullying, prejudice-based and discriminatory bullying)
- › Abuse in intimate personal relationships between children (this is sometimes known as 'teenage relationship abuse')
- › Physical abuse such as hitting, kicking, shaking, biting, hair pulling, or otherwise causing physical harm (this may include an online element which facilitates, threatens and/or encourages physical abuse)
- › Sexual violence, such as rape, assault by penetration and sexual assault (this may include an online element which facilitates, threatens and/or encourages sexual violence)
- › Sexual harassment, such as sexual comments, remarks, jokes and online sexual harassment, which may be standalone or part of a broader pattern of abuse
- › Causing someone to engage in sexual activity without consent, such as forcing someone to strip, touch themselves sexually, or to engage in sexual activity with a third party
- › Consensual and non-consensual sharing of nude and semi-nude images and/or videos (also known as sexting or youth produced sexual imagery)
- › Upskirting, which typically involves taking a picture under a person's clothing without their permission, with the intention of viewing their genitals or buttocks to obtain sexual gratification, or cause the victim humiliation, distress or alarm

- › Initiation/hazing type violence and rituals (this could include activities involving harassment, abuse or humiliation used as a way of initiating a person into a group and may also include an online element)

Where children abuse their peers online, this can take the form of, for example, abusive, harassing, and misogynistic messages; the non-consensual sharing of indecent images, especially around chat groups; and the sharing of abusive images and pornography, to those who don't want to receive such content.

If staff have any concerns about child-on-child abuse, or a child makes a report to them, they will follow the procedures set out in section 7 of this policy, as appropriate. In particular, section 7.8 and 7.9 set out more detail about our school's approach to this type of abuse.

When considering instances of harmful sexual behaviour between children, we will consider their ages and stages of development. We recognise that children displaying harmful sexual behaviour have often experienced their own abuse and trauma, and will offer them appropriate support.

### **Domestic abuse**

Children can witness and be adversely affected by domestic abuse and/or violence at home where it occurs between family members. In some cases, a child may blame themselves for the abuse or may have had to leave the family home as a result.

Types of domestic abuse include intimate partner violence, abuse by family members, teenage relationship abuse (abuse in intimate personal relationships between children) and child/adolescent to parent violence and abuse. It can be physical, sexual, financial, psychological or emotional. It can also include ill treatment that isn't physical, as well as witnessing the ill treatment of others – for example, the impact of all forms of domestic abuse on children.

Anyone can be a victim of domestic abuse, regardless of gender, age, ethnicity, socioeconomic status, sexuality or background, and domestic abuse can take place inside or outside of the home. Children who witness domestic abuse are also victims.

Older children may also experience and/or be the perpetrators of domestic abuse and/or violence in their own personal relationships. This can include sexual harassment.

Exposure to domestic abuse and/or violence can have a serious, long-lasting emotional and psychological impact on children and affect their health, wellbeing, development and ability to learn.

The DSL will provide support according to the child's needs and update records about their circumstances.

### **So-called 'honour-based' abuse (including FGM and forced marriage)**

So-called 'honour-based' abuse (HBA) encompasses incidents or crimes committed to protect or defend the honour of the family and/or community, including FGM, forced marriage, and practices such as breast ironing.

Abuse committed in this context often involves a wider network of family or community pressure and can include multiple perpetrators.

All forms of HBA are abuse and will be handled and escalated as such. All staff will be alert to the possibility of a child being at risk of HBA or already having suffered it. If staff have a concern, they will speak to the DSL, who will activate local safeguarding procedures.

### **FGM**

The DSL will make sure that staff have access to appropriate training to equip them to be alert to children affected by FGM or at risk of FGM.

Section 7.3 of this policy sets out the procedures to be followed if a staff member discovers that an act of FGM appears to have been carried out or suspects that a pupil is at risk of FGM.

Indicators that FGM has already occurred include:

- › A pupil confiding in a professional that FGM has taken place



- › A mother/family member disclosing that FGM has been carried out
- › A family/pupil already being known to social services in relation to other safeguarding issues
- › A girl:
  - Having difficulty walking, sitting or standing, or looking uncomfortable
  - Finding it hard to sit still for long periods of time (where this was not a problem previously)
  - Spending longer than normal in the bathroom or toilet due to difficulties urinating
  - Having frequent urinary, menstrual or stomach problems
  - Avoiding physical exercise or missing PE
  - Being repeatedly absent from school, or absent for a prolonged period
  - Demonstrating increased emotional and psychological needs – for example, withdrawal or depression, or significant change in behaviour
  - Being reluctant to undergo any medical examinations
  - Asking for help, but not being explicit about the problem
  - Talking about pain or discomfort between her legs

Potential signs that a pupil may be at risk of FGM include:

- › The girl's family having a history of practising FGM (this is the biggest risk factor to consider)
- › FGM being known to be practised in the girl's community or country of origin
- › A parent or family member expressing concern that FGM may be carried out
- › A family not engaging with professionals (health, education or other) or already being known to social care in relation to other safeguarding issues
- › A girl:
  - Having a mother, older sibling or cousin who has undergone FGM
  - Having limited level of integration within UK society
  - Confiding to a professional that she is to have a "special procedure" or to attend a special occasion to "become a woman"
  - Talking about a long holiday to her country of origin or another country where the practice is prevalent, or parents/carers stating that they or a relative will take the girl out of the country for a prolonged period
  - Requesting help from a teacher or another adult because she is aware or suspects that she is at immediate risk of FGM
  - Talking about FGM in conversation – for example, a girl may tell other children about it (although it is important to take into account the context of the discussion)
  - Being unexpectedly absent from school
  - Having sections missing from her 'red book' (child health record) and/or attending a travel clinic or equivalent for vaccinations/anti-malarial medication

The above indicators and risk factors are not intended to be exhaustive.

### **Forced marriage**

Forcing a person into marriage is a crime. A forced marriage is one entered into without the full and free consent of 1 or both parties and where violence, threats, or any other form of coercion is used to cause a person to enter into a marriage. Threats can be physical or emotional and psychological.

Staff will receive training around forced marriage and the presenting symptoms. We are aware of the '1 chance' rule, i.e. we may only have 1 chance to speak to the potential victim and only 1 chance to save them.

If a member of staff suspects that a pupil is being forced into marriage, they will speak to the pupil about their concerns in a secure and private place. They will then report this to the DSL.

The DSL will:

- › Speak to the pupil about the concerns in a secure and private place
- › Activate the local safeguarding procedures and if required the Executive Director will refer the case to the police or relevant local authorities.

### Preventing radicalisation

- › **Radicalisation** refers to the process by which a person comes to support terrorism and extremist ideologies associated with terrorist groups
- › **Extremism** is vocal or active opposition to fundamental British values, such as democracy, the rule of law, individual liberty, and mutual respect and tolerance of different faiths and beliefs. This also includes calling for the death of members of the armed forces
- › **Terrorism** is an action that:
  - Endangers or causes serious violence to a person/people;
  - Causes serious damage to property; or
  - Seriously interferes or disrupts an electronic system

The use or threat of terrorism must be designed to influence the government or to intimidate the public and is made for the purpose of advancing a political, religious or ideological cause.

Schools have a duty to prevent children from being drawn into terrorism. The DSL will undertake Prevent awareness training and make sure that staff have access to appropriate training to equip them to identify children at risk.

We will assess the risk of children in our school being drawn into terrorism. This assessment will be based on an understanding of the potential risk in our local area, in collaboration with our local safeguarding partners and local police force.

We will ensure that suitable internet filtering is in place, and equip our pupils to stay safe online at school and at home.

There is no single way of identifying an individual who is likely to be susceptible to an extremist ideology. Radicalisation can occur quickly or over a long period.

Staff will be alert to changes in pupils' behaviour.

The government website [Educate Against Hate](#) and charity [NSPCC](#) say that signs that a pupil is being radicalised can include:

- › Refusal to engage with, or becoming abusive to, peers who are different from themselves
- › Becoming susceptible to conspiracy theories and feelings of persecution
- › Changes in friendship groups and appearance
- › Rejecting activities they used to enjoy
- › Converting to a new religion
- › Isolating themselves from family and friends
- › Talking as if from a scripted speech
- › An unwillingness or inability to discuss their views



- › A sudden disrespectful attitude towards others
- › Increased levels of anger
- › Increased secretiveness, especially around internet use
- › Expressions of sympathy for extremist ideologies and groups, or justification of their actions
- › Accessing extremist material online, including on Facebook or Twitter
- › Possessing extremist literature
- › Being in contact with extremist recruiters and joining, or seeking to join, extremist organisations

Children who are at risk of radicalisation may have low self-esteem, or be victims of bullying or discrimination. It is important to note that these signs can also be part of normal teenage behaviour – staff should have confidence in their instincts and seek advice if something feels wrong.

If staff are concerned about a pupil, they will follow our procedures set out in section 7.5 of this policy, including discussing their concerns with the DSL.

Staff should **always** take action if they are worried.

Further information on the school's measures to prevent radicalisation are set out in WS Prevent Duty Policy.

### **Sexual violence and sexual harassment between children in schools**

Sexual violence and sexual harassment can occur:

- › Between 2 children of any age and sex
- › Through a group of children sexually assaulting or sexually harassing a single child or group of children
- › Online and face to face (both physically and verbally)

Sexual violence and sexual harassment exist on a continuum and may overlap.

Children who are victims of sexual violence and sexual harassment will likely find the experience stressful and distressing. This will, in all likelihood, adversely affect their educational attainment and will be exacerbated if the alleged perpetrator(s) attends the same school.

If a victim reports an incident, it is essential that staff make sure they are reassured that they are being taken seriously and that they will be supported and kept safe. A victim should never be given the impression that they are creating a problem by reporting any form of abuse or neglect. Nor should a victim ever be made to feel ashamed for making a report.

When supporting victims, staff will:

- › Reassure victims that the law on child-on-child abuse is there to protect them, not criminalise them
- › Regularly review decisions and actions, and update policies with lessons learnt
- › Look out for potential patterns of concerning, problematic or inappropriate behaviour, and decide on a course of action where we identify any patterns
- › Consider if there are wider cultural issues within the school that enabled inappropriate behaviour to occur and whether revising policies and/or providing extra staff training could minimise the risk of it happening again
- › Remain alert to the possible challenges of detecting signs that a child has experienced sexual violence, and show sensitivity to their needs

Some groups are potentially more at risk. Evidence shows that girls, children with SEN and/or disabilities, and lesbian, gay, bisexual and transgender (LGBT) children are at greater risk.

Staff should be aware of the importance of:





- › Challenging inappropriate behaviours
- › Making clear that sexual violence and sexual harassment is not acceptable, will never be tolerated and is not an inevitable part of growing up
- › Challenging physical behaviours (potentially criminal in nature), such as grabbing bottoms, breasts and genitalia, pulling down trousers, flicking bras and lifting up skirts. Dismissing or tolerating such behaviours risks normalising them

If staff have any concerns about sexual violence or sexual harassment, or a child makes a report to them, they will follow the procedures set out in section 7 of this policy, as appropriate. In particular, section 7.8 and 7.9 set out more detail about our school's approach to this type of abuse.

### **Checking the identity and suitability of visitors**

All visitors will be required to verify their identity to the satisfaction of staff prior to their visit and told they are not permitted to take photos with their mobile phone whilst on campus.

If the visitor is unknown to the setting, we will check their credentials and reason for visiting before allowing them to enter the setting. Visitors should be ready to produce identification.

Visitors are expected to sign the visitors' book and wear a visitor's badge.

All other visitors, including visiting speakers, will be accompanied by a member of staff at all times. We will not invite into the school any speaker who is known to disseminate extremist views, and will carry out appropriate checks to ensure that any individual or organisation using school facilities is not seeking to disseminate extremist views or radicalise pupils or staff.

### **Non-collection of children**

If a child is not collected at the end of the session/day, we will:

- › Contact parents and supervise the student until the parent arrives

### **Missing pupils**

Our procedures are designed to ensure that a missing child is found and returned to effective supervision as soon as possible. If a child goes missing, we will follow the procedures outlined in the WS Lost of Missing Student Policy.

## Appendix 5: When and how to share information

### When and how to share information

When asked to share information, you should consider the following questions to help you decide if, and when, to share. If the decision is taken to share, you should consider how best to effectively share the information. A flowchart follows the text.

#### When

Is there a clear and legitimate purpose for sharing information?

- Yes – see next question
- No – do not share

Do you have consent to share?

- Yes – you can share but should consider how
- No – see next question

Does the information enable an individual to be identified?

- Yes – see next question
- No – you can share but should consider how

Have you identified a lawful reason to share information without consent?

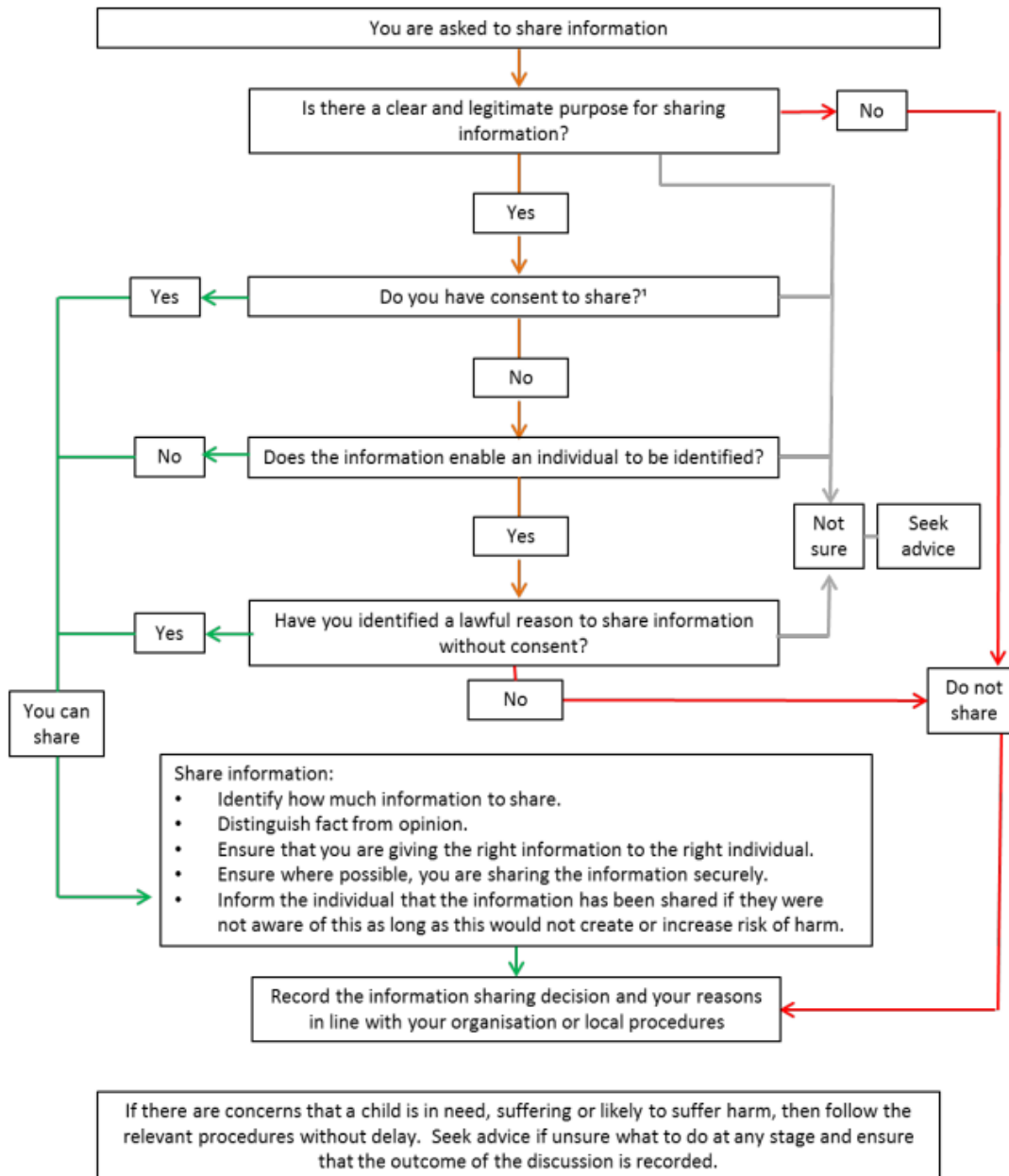
- Yes – you can share but should consider how
- No – do not share

#### How

- Identify how much information to share
- Distinguish fact from opinion
- Ensure that you are giving the right information to the right individual
- Ensure where possible that you are sharing the information securely
- Where possible, be transparent with the individual, informing them that the information has been shared, as long as doing so does not create or increase the risk of harm to the individual.

All information sharing decisions and reasons must be recorded in line with your organisation or local procedures. If at any stage you are unsure about how or when to

## Flowchart of when and how to share information





## Appendix 6: KCSIE Part 1 Staff Acknowledgement Form:

To be completed each year as a part of the summer induction programme and kept on record by HR

**I have read:**

1. The IBSB Child Safeguarding Policy, August 2024
2. The UK Document: *Keeping children safe in education, Guidance for Staff, Sept 2024*

and I understand my role with regards to Child Safeguarding at IBSB.

[Please tick, sign and date to confirm]

STAFF NAME	Tick	SIGNATURE	DATE